



**COUPLING &
ADAPTERS**

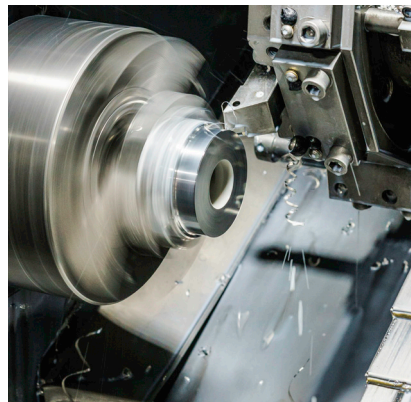


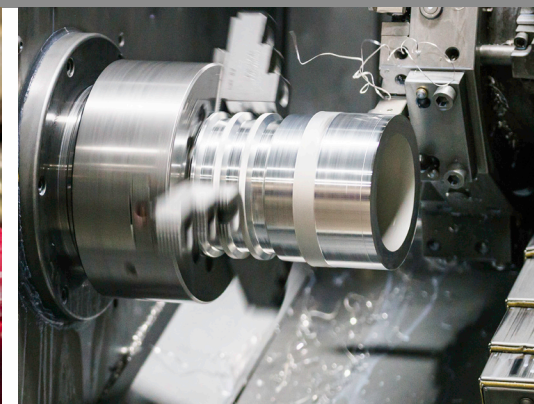
INDUSTRIAL FITTINGS



U.S. Coupling is the leader in layflat hose connections. Our field attachable line of sexless layflat hose couplings are used throughout the world for large volume water and slurry transfer. Large high volume connections are used in markets such as Oil & Gas Hydraulic Fracturing, Mine Dewatering, Emergency Water Supply, and Industrial Firefighting. All fittings are manufactured in North America from premium extrusions, castings, and hard coat anodized to military specifications. All of our fittings can be used with PVC Nitrile or PV hoses.

US
COUPLING





STORZ



PROVEN DURABILITY.

*Engineered for
strength and
compatibility.*

Storz fittings are the standard for many parts of the world. Used for secure and quick connection of layflat hose for the industrial fire market for large scale fire fighting operations interlocking lugs ensure full engagement with high strength. Couplings are sold as sets and include Head, Shank, and Double Bolt Segmented Collar assemblies.

Storz Mounting Plate ▶



▶ Storz Coupling



▶ Storz Blind Cap

US COUPLING

GROOVE



HIGH-FLOW CONNECTED.

*Designed for
compatibility and
performance.*

Our Groove Shank Couplings feature a standard grooved shank end that seamlessly connects with grooved pipe couplings. The shank end is engineered to U.S. Coupling specifications, incorporating an extended shank design with secure double-bolt segmented collars for reliable, high-strength connections. Available in sizes from 2" to 12". Sold individually or in sets.

Groove Coupling Set



Groove End Coupling

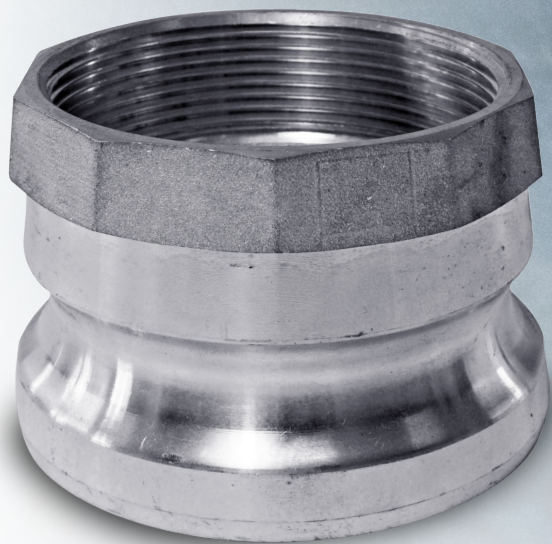
CAMLOCKS



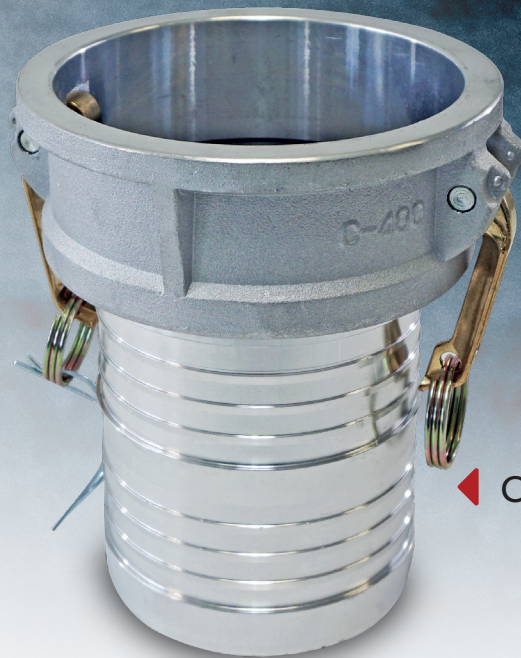
TOOL-FREE FLOW.

*Fast, secure,
tool-free
connections.*

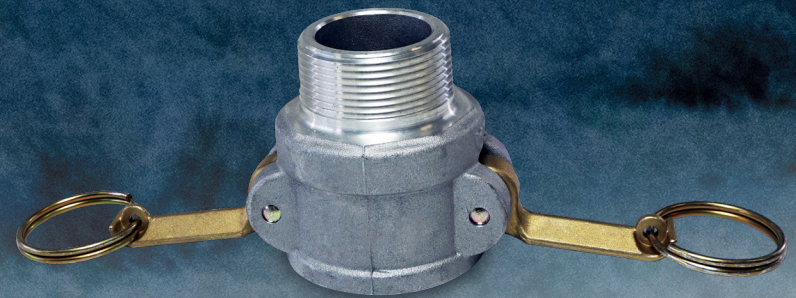
Also known as cam and groove couplings, camlock fittings offer a fast, secure, and tool-free solution for connecting large-diameter hose in industrial applications. The design allows the grooved coupling to be inserted into the cam coupling and locked in place by simply closing the cam (or lever) arms- no wrenches or clamps needed. U.S. Coupling's camlock fittings are built for durability, ease of use, and dependable sealing, making them ideal for fluid transfer in demanding environments. Available in multiple sizes and materials to suit a wide range of setups, these fittings help crews save time while maintaining leak-free performance.



▲
Cam & Groove Type A



▲ Cam & Groove Type C



▲
Cam & Groove Type B

US COUPLING

NPT FITTINGS



**FIELD
TRUSTED.**

*Leading industrial
fittings.*

Our NPT fittings are engineered to provide a reliable, secure connection between large-diameter hose and a wide variety of adapters, couplers, and equipment. Designed for durability in demanding environments, these fittings make it easy to adapt your hose system to meet specific operational needs- whether you're working with pumps, valves, tanks, or other components.



▲
Shank X Male NPT Hose End



▲
2.5" NH Threaded X 2.5" NPT

ADAPTERS



PRECISION ADAPTERS.

*Machined for
durability.*

Our lightweight adapters are fully machined, hard-coat anodized. Adapters are available in sizes 2" through 12" and in various configurations, allowing you to adapt from one size to another or from one coupling type to another.



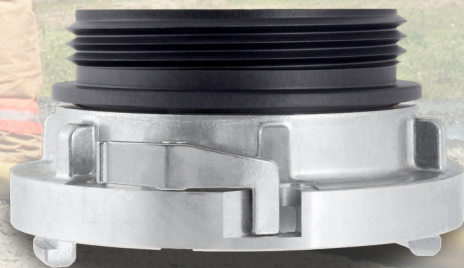
▲
Storz X Rocker Lug Swivel
Female Adapter



▲
Flange X Storz Connection



▲
Storz X Rigid Female Adapter



▲
Storz X Rigid Male Adapter



▲
Storz X Groove End Adapter

MANIFOLDS



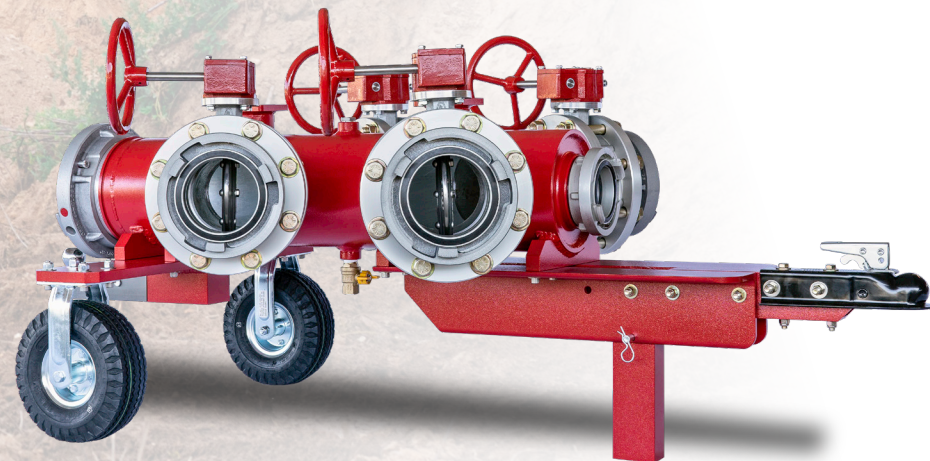
HEAVY-DUTY MANIFOLDS.

*Precise control,
every time.*

U.S. Coupling manifolds are engineered for high-flow performance and durability in demanding fluid transfer operations. Built with heavy-duty materials and precision welding, these manifolds ensure consistent flow distribution across multiple lines. Available in a range of sizes and configurations, they're designed for easy connection, fast setup, and long term reliability.



▲
Spider Manifold



▲
Manifold

FAMILY OF BRANDS



**STRONGER
TOGETHER.**

*Powering
performance
across industries.*

From precision engineered couplings to high performance hose, control systems, and firefighting solutions, our Family of Brands — Puck Fire, LightSpeed, BullDog Hose Company, and U.S. Coupling — deliver unmatched quality and reliability. Together, we're building smarter systems for the toughest jobs in municipal and industrial markets.





MISSION, VISION & ISO



MISSION

We strive to create wealth and a higher quality of life for our team, our customers, and our community.

VISION

We believe we can lead the industries we serve by creating innovative solutions with positive applications and effects.

That takes...

▶ **Teamwork** ▶ **Innovation** ▶ **Enjoyment**

ISO 9001:2015

Puck has produced a quality management system compliant with ISO 9001:2015 standards.

By establishing the Puck Quality Management System, Puck has established internal standards to achieve improved customer and employee satisfaction. The standards set by ISO 9001 ensures that Puck is able to measure ourselves and our processes to ensure that we are performing our best.

PROUDLY AMERICAN MADE

In the land of the free Puck is built to lead.

Our products are proudly hand-crafted in the heart of this great country—in the very town our company was founded over 45 years ago. We utilize only the best materials from the ground up to keep your operation running strong year after year.



MANNING
1110 100th St
Manning, IA
712.655.9200

ANGIER
*Bulldog Hose
Company*
141 Junny Rd
Angier, NC
712.655.9201

DUBUQUE
10166 Hartbecke Rd
Suite B · Farley, IA
712.655.9203

DOTHAN
U.S. Coupling
1134 North Range St
Dothan, AL
888.447.6441

AURORA
3626 State Route 90
Aurora, NY
712.655.9206

INTERNATIONAL
Vukovarska 229 C
31000 Osijek ·
Croatia
+ 385 31 659 229

WORTHING
47086 Pioneer St
Worthing, SD
712.655.9202

Follow us on social media



U.S. COUPLING



PUCK 1110 100th Street Manning, Iowa 51455 712.655.9200 puck.com