

FLOWING FORWARD

► 2025: Issue 2

MAGAZINE





OUR MISSION

TEAMWORK INNOVATION ENJOYMENT

We strive to create wealth and a higher quality of life for our team, our customers and our community. The Puck spirit of innovation drives us to create the equipment and technology that define the standard for tomorrow.

In our magazine, *Flowing Forward*, you will see stories of teamwork, innovation, and enjoyment of not only our team, but our customers. Enjoy!

A Note from Jeremy

Flowing Forward means continuing to find new ways to solve new problems. 2024 was a year of overall uphill challenges for a variety of reasons, and each one of those challenges provided an opportunity for us to improve in different areas. We talked about creating balance in our company while also innovating new products and expanding into new markets throughout the year. I am incredibly proud of the effort by many on our team to find solutions to create growth and balance in a tough market. In 2025 we are pushing farther into the Industrial Fire Equipment market while continuing to focus on the Agricultural market that consistently seeks new solutions to increase efficiency. Just like our application, we are also working on efficiencies to provide more innovative equipment to help our customers maximize their return on investment when they choose to partner with us.

I thank all our customers for the opportunity to serve them and help take their business to the next level. We have been working on this publication that we plan to release semi-annually to show you what we have been up to. Thank you again for the opportunity, and I hope you enjoy it!



AMERICAN MADE TOUGH BULLDOG HOSE COMPANY

From our earliest hose to today's Hi-Combat®, Firepower, Hi-Vol® and Ultima, BullDog Hose Company has led the way in fire innovation. Trusted by departments nationwide, our American-made hoses deliver unmatched performance, durability, and safety.

BullDog also produces large diameter hoses and flexible pipeline systems for agriculture, industrial, military, and firefighting- built to handle everything from fuel and water to liquid manure.

Call **712.655.9201** to learn more.



AMERICAN MADE TOUGH.™

Contact us today: 712.655.9201 · puck.com/bulldog-hose-company



CELEBRATIONS

Puck Celebrates 15 Years of Manufacturing

The summer of 2025 marked the 15th anniversary of Puck's ribbon cutting ceremony for the first manufacturing building. Since the creation of the first Puck hydraulic hose cart in 2005, Puck products have caught the attention of the liquid manure pumping industry. Our first hose cart was sold in 2007, and we haven't looked back since. Within a few years, we outgrew the original Red Barn where the business started and began construction on the first Puck manufacturing building.

Remembering the Construction

Despite still working out of the Red Barn, construction on the new building was partially done by employees. "Ben and some of the guys did all the dirt work," said Joe Heese, Puck Sales Team Member. "We put up the rails for the overhead cranes." Puck employees at the time gave their full dedication and effort to the company to make the construction of the first building a success.

Parts Salesman RJ Arp recalls the pride among Puck employees when the new building was completed. "It was a big improvement from the Red Barn," said RJ.

"We weren't working on top of each other and had plenty of space. With this space we were all **proud to work at PCE** and took a lot of pride in everything we did."

Growth

It didn't take long for the new space to be used. "It felt as though the shop filled up in about two months," said Chris Reis, Manufacturing Engineer Lead. "Trailers were literally stacked on one another. It became clear pretty quickly that we would need more space again soon. We kept growing and growing," recalls Chris. "With all the growth, we never got comfortable in one area and with all the new tools and equipment before things changed again. It was always very exciting."



Ribbon Cutting, June 2010



CELEBRATIONS



Puck Team, June 2010



Production Floor



Warehouse Area



Board Room



Showing Guests Equipment



We're Celebrating

15 Years of Manufacturing

Take a look at the changes over 15 years!



CELEBRATIONS

TTR15P Nominated: Coolest thing Made In Iowa

With more than 200,000 Iowans employed in the manufacturing industry, Iowa has a proud tradition of innovation and craftsmanship. To celebrate the incredible range of products made across the state, the Iowa Association of Business and Industry (ABI) and MidWest One Bank created the annual Coolest Thing Made in Iowa — a showcase of the ingenuity and excellence found in Iowa-made products.

This year, Puck was honored to have the Puck Fire TTR15P hose reel nominated and selected to participate in the contest. As a company with over 20 years of experience manufacturing hose carts, we were proud to see our hard work and innovation recognized on a statewide stage.

The TTR15P was designed to support firefighters by making one of the most physically demanding parts of their job—flaking and re-rolling hose—safer, faster, and more efficient. It's a product built with purpose, and we're proud of the positive impact it can have in the industrial fire market.

While we didn't take home the title this year, we're incredibly grateful for the opportunity to be part of a competition that celebrates what makes Iowa manufacturing so exceptional. Being nominated is a win in itself, and we're thankful to our team, our customers, and the community for supporting us every step of the way.



PUT YOUR WORK ON DISPLAY

We're building our

**2026
Calendar**

and want your best field shots
featuring our products!

Submit your photos now!
puck.com



FROM THE FIELD

2025 Calendar Pictures

JANUARY



FEBRUARY



MARCH



APRIL



MAY



JUNE



JULY



AUGUST



SEPTEMBER



OCTOBER



NOVEMBER



DECEMBER



CELEBRATIONS

Celebrating Our Team's Milestones

We are proud to honor the dedication and commitment of our team members celebrating anniversaries at these incredible milestones:

30 Years

Patricia Scriven

Marc Arp

Robert Davis

Brenda Matthews

Russell Furtick

25 Years

Gary Stewart

William Cummings

20 Years

Jacob Doyel

10 Years

Aaron Dickson

Zackery Scott

Laura Pepple

Wayne Graham

Matthew Lindemann

Justin Dickson

Janice Darnell

Jacob Thraen

INDUSTRY-LEADING FAMILY OF BRANDS



YOUR CORNELL SUPERSTORE



Puck is proud to be your Cornell Superstore! Our one-acre warehouse stocks a variety of Cornell pumps and parts to keep your operation going.

Order your Cornell pumps and parts today by calling **712.655.9200**



PUCK™

Built to Lead.



INNOVATION

Mainline Hose Updated

BullDog's large diameter Mainline hose has been upgraded for 2025. The new military green lay-flat hose has a thick outer jacket and is extruded through the weave for increased durability.

In addition to its kink resistance, the upgraded Mainline hose is resistant to fuels, chemicals, UV, ozone, weathering, hydrolysis and microbiological attack. The tough elastomeric polyurethane cover and lining gives the hose a long life and maintenance-free service, even in the toughest field conditions.

Mainline agricultural hose is available in 8" and 10" diameters.



Mainline in the Field

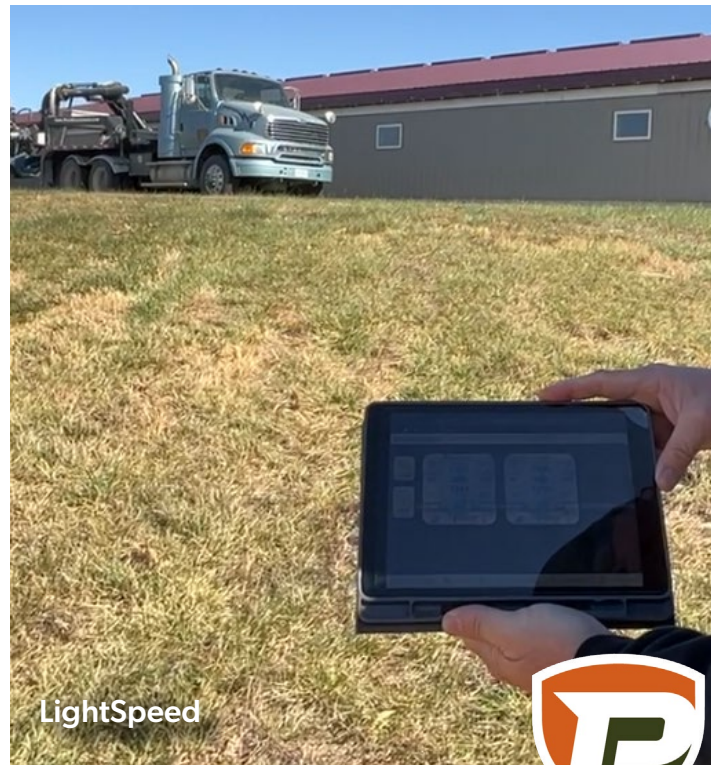


TTR 20 with Mainline

Auto-Throttle Streamlines Performance

With LightSpeed's Auto-Throttle settings, you no longer need to constantly monitor pressure regulation. Enter your desired inlet and outlet pressures and LightSpeed will automatically throttle the engine of each pump up or down to meet user-defined parameters. The instant changes to pressure help minimize the chance of cavitation while maximizing flow rates. Your operation's efficiency will improve with less downtime and fewer catastrophic repairs.

On booster pumps, auto-throttle can control the inlet and outlet pressure at the pump. With lead pumps, LightSpeed's auto-throttle can control the flow rate in addition to the pressure regulation. Auto-throttle will instantly increase or decrease RPM to meet the preset operational parameters of each pump. LightSpeed's warning indicators for machine vitals and operating parameters will notify you when changes are detected, even as auto-throttle makes the necessary adjustments. The remote, real-time monitoring adds an additional layer of safety and security on the job.



LightSpeed



INNOVATION

Revolutionizing Fire Response: The Puck Fire Tote Trailer

Puck Fire is excited to introduce our latest piece of innovation into the industrial fire market. The Puck Fire tote trailer features a robust chassis designed from the ground up for stability and safety while in transport and while in use on an emergency scene. Unlike other competitive offerings, the Puck Fire tote trailer features an A-frame chassis design that is balanced for transport with or without foam concentrate loaded into the totes. Standard electric trailer brakes ensure a safe transport to and from the fire scene and a full DOT lighting package always ensures visibility. Once on scene the Puck Fire tote trailer utilized 4 large corner jackstands to stabilize the trailer, even on uneven ground. The operator's platform is free of any tripping hazards and hoses because of the design of the foam concentrate manifold that is hidden below the platform. This hidden pipework allows a large operators platform as well as a clean appearance of the trailer.

Puck Fire tote trailers come standard with an inline water style foam eductor that accurately educts

foam into the master stream monitor and nozzle without the need of a suction tube or stabbing into foam totes, simply dial into the correct proportion for your operation and start flowing water. Puck Fire Foam Tote Trailers can also be outfitted with up to 2 additional foam eductors, one on each hose bin above the fenders for additional foam deployment capability. Once the emergency scene has been cleared, the automatic drain valves will begin draining the water and residual foam concentrate from the system, allowing a safer and more efficient tear down procedure.

Puck Fire tote trailers come in configurations of Dual Tote, Dual Agent Single Tote, Triple Tote, and Dual Agent Dual Tote for a wide array of applications. Puck Fire tote trailers can also be outfitted with remote control monitors and nozzles as well as a NFPA emergency lighting package, both of which have not been seen in the industry before.

Puck Foam Tote Trailers are built in the U.S.A.
and are American Made Tough.

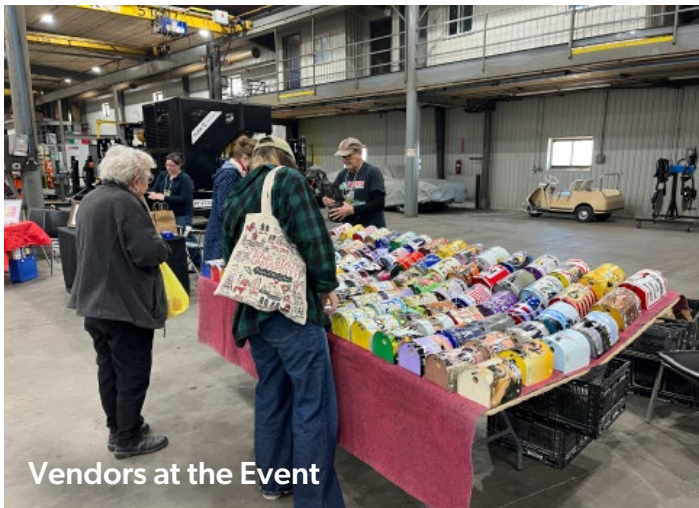


IN THE COMMUNITY

Women in Ag Event

The Friday of National Ag Week in March, Puck welcomed women from the surrounding area for our Women in Ag event. This event was centered around a woman's role in the agricultural industry and celebrated their contributions. Guests received gifts upon arrival, including a campfire ceramic mug, as well as being entered to win one of the door prizes provided by one of the vendors.

Vendors came early in the afternoon to set up their booths and present their business and its products to Women in Ag guests. The 2025 vendors had a range of products, such as clothing, birdhouses, jewelry and accessories, honey, nutritional drinks, and baked goods. Upon arrival, guests wandered the vendor booths and enjoyed drinks and snacks.



Vendors at the Event

Becky Sexton from Twin Lakes Environmental Services made it out to Manning for her first Women in Ag event at Puck. "I have a lot of admiration for Puck and the people who work there," said Becky. "This was a great opportunity to get out of the office and meet some new people, as well as people who I wanted to get to know better."

Puck's 2025 Women in Ag event had three speakers; Alexis Stevens from Landus and Iowa State University, Madelynn Wuestenberg from ISU, and Jamie Lindemann from L3Co. Alexis gave two presentations, and the first looked at the agricultural market and the

future of ag. In this presentation, Alexis showed the data on past crop sales and their predicted futures in the market.



Alexis Presenting

"I'm an intelligent person, but numbers can be hard to follow along in a presentation," said Becky. "Alexis presented so much great information in a way that was easy to follow along and understand." In her second session, Alexis dove into AI in agriculture and explained how artificial intelligence has the potential to assist the industry.

Madelynn's presentation was a look at Iowa's 2024 Weather Superlatives, examining the areas of the state that received the most abnormal weather events last year. She explained the latest meteorological predictions from Iowa State University for the country's spring weather and how that can affect farmers in our area. Madelynn also gave attendees ideas on how they can participate in the nation's precipitation monitoring through programs like CoCoRaHs.



Madelynn Presenting



IN THE COMMUNITY

Women in Ag Event Continued

Jamie, based out of Southeast South Dakota, owns and operates a family farm of pastured Berkshire pigs. She shared the story of how she got into pasture farming to begin Lindy Land and Livestock. L3Co's unique pasture-raised practices combine rotational grazing with portable infrastructure and technology to create the best-tasting pork for customers. Jamie also explained how she markets to customers directly in addition to supplying local restaurants.

Becky enjoyed the event so much that she plans to attend next year, as well. "It's such an empowering thing to have for women in the industry, I learned a lot," she said. "I liked seeing the guys I know at Puck, but I really enjoyed meeting new women. I plan to invite more people to join me next year!"

Puck's National Ag Week events are held each spring to celebrate those who work either directly or indirectly in agriculture. The annual Women in Ag event is a chance for women across the industry to network, share experiences, and learn from qualified speakers and educators. We look forward to our 2026 National Ag Week events.



Group Tours at Puck's Manning Location



PUCK  TM *Built to Lead.*



SMALL SCALE PUCK EQUIPMENT LINE!

Order your 1/64 scale die-cast Puck toys today by calling **712.655.9200**

FF 5770

Force Feed with
Boom \$47



WH 5780

Warthog Pump
Unit \$38



TTR 20

Turn Table Reel
\$35



HC 16

Hose Cart
\$35



**TOOLBAR WITH
SWINGARM**

Toolbar with
Swingarm \$69



EXTRA HOSE

Extra length of
BullDog Hose
\$15



**4WD SWINGARM
& TOOLBAR**

4WD Tractor Mounted
Swingarm with
Toolbar \$69



FROM THE FIELD

Hi-Combat Fire Hose Gets a New Look

Firefighter preferred interior attack lines are brighter; BullDog's Hi-Combat® firefighting hose is now available in Hi Vis. This new neon green stands out in low lighting for the greatest visibility inside smoky buildings. The NFPA color is extruded through the weave rather than dyed, so the bright color will not bleed or wear off. Like the other five Hi-Combat® colors, this fire hose combines high resistance to heat, abrasion, and chemicals with unmatched kink resistance and superior ease of drag. The new, bright color still has the option for custom stenciling and exit arrows to follow the hose line back outside. Engineered by BullDog, Hi-Combat® is guaranteed to meet specified burst pressure and exceed the NFPA 1961 standard.

OUR NEW BRIGHTEST COLOR OF HI-COMBAT

*Stand out with the
new Hi Vis color
added to our
Hi-Combat line.*



For information about our Hi-Combat fire hose, call 712-655-9201 to talk to one of our team members.



BullDog
HOSE COMPANY

WE'RE OPEN!

**Aurora, NY location is available
for Parts & Service**

712.655.9206

3626 State Route 90 Aurora, New York



Join Us At Our Free

PUMP SCHOOL



FROM THE FIELD

TECH TIP: PRESSURE SENSOR CARE

Tech Tip: Pressure Sensor Care

If you run your dragline equipment with a faulty pressure transmitter, you increase the risk of serious problems. These issues can create safety hazards and lead to costly repairs. In cold weather scenarios, it's even possible to see transmitters freeze and become unresponsive. In some cases, debris and other operating conditions can put these transmitters in a difficult position.

Puck equipment has transmitters fixed to the inlet and outlet of the plumbing with a 90° fitting. That fitting is filled with a standard NLGI 2 grade grease from the inside of the pipe out toward where the sensor connects. This method expels air pockets and provides a sensing transfer media that doesn't freeze. It also prevents debris from contacting the transmitter face. Outlet pressure sensors, depending on equipment type, may need inspection more regularly given the orientation of directed, compressed air from an air compressor coupled to a pig launcher. When reinstalling the transmitters, be careful to not over-tighten the sender. This can also cause failure at the measurement interface.



FROM THE FIELD

Customer Profile: Pitstop Pumping

From Granada, Minnesota, Neil Hanson and Greg Hanson own Pitstop Pumping. They own 4,000 acres of rowcrop and market 45,000 pigs annually. Pitstop Pumping pumps all of their own manure and custom pump in and around Martin County.

When they started

In 2015, they started with:

- 1,600-1,800 gallons per minute
- 190-200 psi with 7" Mainline hose and 5-1/2" Drag hose
- 25 million gallons annually

Where they are at now

- 2,900 gallons per minute
- 175 PSI through 10" Mainline hose, 8" Mainline hose and 7- 1/4" Drag hose
- 60 million gallons annually
- Custom apply 7,000 acres with manure

Through the years, Pitstop Pumping has owned many pieces of Puck equipment, including:

- Force Feed 5069
- Force Feed 4069
- Two Agitation trailers
- Four Hose Cart 16s
- 4 miles of a mix of 10" and 8" hose
- Dietrich Toobar with a swinger
- Two Hose humpers
- Three 4069 Pump Trailers



Pitstop Pumping Pump Trailer



Pitstop Pumping Equipment



Pitstop Pumping Equipment



FROM THE FIELD

Safety, Safety, Safety

As printed in the Progressive Dairy magazine, written by Katie Kelderman from the Puck Marketing team, with insights from our expert team.

A major factor in operational safety in manure application is knowing what could go wrong and how to mitigate those risks. Various causes can lead to minor incidents or, at worst, a disabling injury. There are a few things you can do before and during a job to keep the risk of accidents low.

Dressing for the job

The proper attire is one simple way to mitigate safety risks at a job site. Gloves, boots, and long pants can help minimize minor scratches and cuts. When working near large equipment, glasses and ear plugs can help protect long term health. When it comes to manure application, a dragline requires a lot of moving parts. It is recommended that anyone in the field or at site wear hi vis shirts or reflective vests to improve visibility.



Improve Staff Visibility with Reflective Vests

Dairy and cattle barns are less dangerous in regards to hydrogen sulfide (H₂S), but a monitoring system can still be helpful when inside. High hydrogen sulfide levels can create various symptoms in humans, and can eventually lead to coma or death if levels get too high. Dairy and cattle barns are still an enclosed space with animals, so a proper face mask or respirator can help protect against harmful dust and odors.

Importance of communication

Every crew member of your dragline operation should be aware of what's happening at any moment. Communication devices should be tested at the start of each day and chargers, cables, and headsets should be readily available. Relay your next step over the line, and then stick to doing that task with full focus. Unnecessary chatter can be distracting when you're firing up, shutting down, laying hose bowties, and more.

If there is a language barrier among crew members, a shorthand should be established and trained for each employee before stepping onto the site. Communication is a two-way street, and every crew member should be able to understand the risks and procedures of their job as it happens.

Personnel training

Before they ever step onto the field, every crew member should be fully trained on their roles and responsibilities. This includes the exact equipment they are to use, as well as the overall plan for the job. Crew members should also know when their equipment is in need of maintenance.

Shutdown thresholds and procedures

Each crew member should be fully trained in the criterion for when to begin shutdown procedures. Knowledge of what to do when an issue arises includes knowing when to make the call up the chain of hierarchy. Stopping the flow of manure or further damage should take priority, but authorities may need to be notified in catastrophic events. A spill kit is recommended at each job site and should contain important phone numbers, flags or flares, triangles, bales, pumps, shovels, shutoff valves, a fire extinguisher, a first aid kit, plywood, and more.

Equipment transportation

When moving your equipment to the job site or the next field, there are precautions to take to ensure



FROM THE FIELD

Safety, Safety, Safety continued

the safety of your crew and other drivers on the road.

Manure storage and agitation

Even without agitating, manure storage can be very dangerous. Every precaution should be taken to maintain a safe distance from the manure lagoon or other storage.

Hose precautions

When attaching hoses, make sure that you are using lines with approved clamps. All fasteners should be placed in a downward position so they do not fall out when the pump unit is running. Contained air can be very dangerous, so be sure to bleed off any air pressure in the hose lines before attaching hoses. Before unhooking any hoses, clamps or caps, open all of the gates and carefully open the pressure relief valve to ensure all of the air pressure is relieved from the hoses and piping.

Changing hose couplers

Improper installation of large diameter hose couplings can cause problems and personal risk down the road. The most important aspect of coupler installation is getting the tightness just right to avoid complications. A coupler that is too loose may slip off, and one that is too tight may lead to sheared bolts or cutting structural yarn that leads to a ripped hose. We recommend tightening the coupler bolts to a maximum of 60' per pound. It's easy to over-tighten

the nut if you use an impact wrench or breaker bar. A good rule of thumb is to get it as tight as you can with a T-handle allen wrench.

Operating pump units

When the pump is in operation, people and foreign objects should remain clear of the unit. In addition to avoiding loose clothing near pump units, keep body parts away from pinch points, crush points, or rotating parts. The fan is particularly dangerous and may cause serious injury. Be sure to turn the engine off and wait for the fan to stop moving before servicing. No one – for any reason – should be on the pump while it is in operation.

When the pump unit is in motion or about to be operated, the operator must be inside the tractor cab, and any other people need to maintain a distance of at least 20'. Driving or parking pump trailers on steep slopes may lead to the pump unit rolling or losing balance, which can cause serious injuries.

The dangers of compressed air

Purging the hose line, or pigging the line, is the most dangerous task dragline operators do. Using compressed air to move the pig creates air pressure that's erratic and unpredictable. The hose line turns into a container of stored energy until the pig clears the line. If a hose ruptures, air should be shut off as soon as it is safe to do so, and everyone should remain at a safe distance (a minimum of 50') out of the way until the air bleeds off entirely.

The biggest precaution you can take to ensure the safety of your crew is proper training. Before ever stepping foot on the job site, each crew member should be fully versed in good safety practices and risks involved with their roles and responsibilities. Consider adding a mandatory safety meeting to your preseason planning.



Changing Hose Couplers



FROM THE FIELD

Customer Profile: Walton Manure Management LLC

Travis Walton, from New York, is a partner owner of Walton Manure Management LLC with his father and brother. Let's take a look at their operation.

What is your role with Walton Manure Management LLC?

I am in charge of the daily operations of the draglines and manure tanks.

How long has Walton Manure Management LLC been in business?

Our family has been in the manure business for over 25 years with manure tanking and manure semi hauling. We started draglining in 2017 with another brand of dragline equipment and quickly learned that Puck equipment was needed to be much more efficient.

When did you purchase your first piece of Puck equipment?

We purchased our first Puck pump, a used Honey Badger, in 2020 from Eric Ramsey.

What Puck equipment do you currently own?

- Two Swingers on Steigers
- One toolbar
- Three TTR 20s
- One Hose Cart 16
- One WH 5770 lead pump with a Lagoon Feeder
- One Force Feed 5770
- One 4570 Pump Trailer
- One 5480 Pump Trailer

How many gallons you pump?

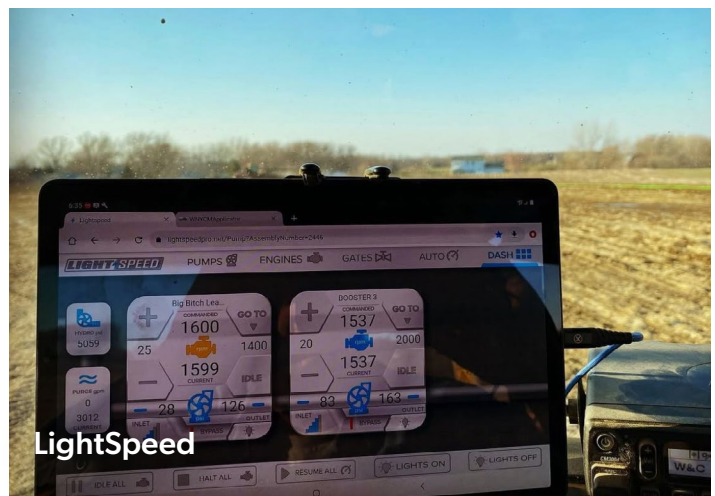
We are currently pumping 235 million+ gallons a year with two dragline crews and manure tanking with 2 Houle 9500 gallon tanks 100 million gallons a year. All together our company is applying 335+ million gallons a year.

How many employees do you have?

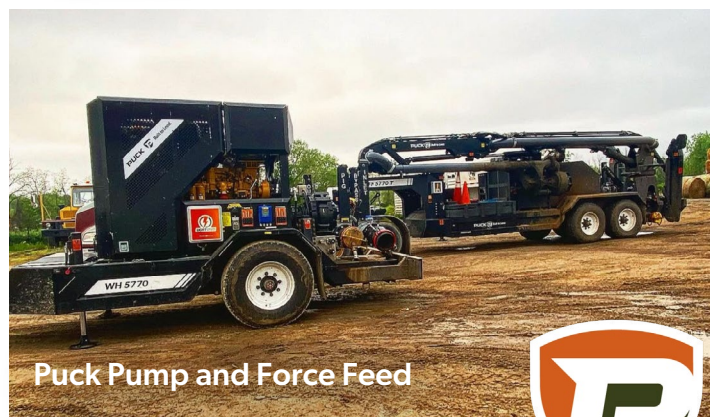
We currently have 10 employees, of which six are South Africans.



Walton Manure Management in the Field



LightSpeed



Puck Pump and Force Feed



FROM THE FIELD

The Soundtrack of Manure Pumping: Customer Insights Revealed

We put the request out on Facebook and Instagram for our customers to tell us what they listen to while pumping manure. The results are in, and we're sensing a theme! Beyond podcasts like Joe Rogan and pop hits from Chappell Roan and Shania Twain, country music was the third most popular genre. Customers songs from Luke Combs, Aaron Lewis, and the popular favorite from Johnny Paycheck, "Take This Job and Shove It."

The second most popular genre was rap and hip hop. Favorites from the genre include Good Day by Greg Street ft. Nappy Roots, and hits from Eminem, JAY-Z, and Tyga. Everyone overwhelmingly agreed with the most popular genre, classic rock. Many respondents listed Metallica, Ozzy Osbourne, Led Zeppelin, Lynyrd Skynyrd, AC/DC, Twisted Sister, Jon Bon Jovi, Guns N' Roses, and the Beastie Boys.

Thanks to all the responses from our customers, Puck has crafted the ideal playlist for the pumping season.

Connect your headphones or turn up the speakers for these high BPM tunes! Alternatively, you can take a page from New York's Carl Minde's book and listen to your own thoughts while you work, as his team joked.

Country

Country Boy - Aaron Lewis
Ain't no Love in Oklahoma - Luke Combs
Take This Job and Shove It - Johnny Paycheck
Rhinstone Cowboy - Glen Campbell
Cadillac'n - Kendell Marvel

Rap

Good Day (Original Performance Version) - Greg Street ft. Nappy Roots
Splash - Tyga ft Moneybagg Yo
St Louie - Nelly
Clint Eastwood - Gorillaz ft Del The Funky Homosapien
B.O.B. - Bombs Over Baghdad - Outkast
Boyz-N-The-Hood - Eazy-E
The Real Slim Shady - Eminem

Dr. Dre

Still D.R.E. ft Snoop Dogg
Forgot About Dre

Kanye

Stronger
POWER
Jesus Walks

JAY-Z

99 Problems
Big Pimpin'
Dirt Off Your Shoulder

Beastie Boys

Intergalactic
So What'Cha Want

Body Movin'

Sabotage
Paul Revere

Rock

Kickstart My Heart - Motley Crue
We're Not Gonna Take It - Twisted Sister
Welcome to the Jungle - Guns N' Roses
Born Free - Kid Rock
Every Rose Has Its Thorn - Poison
Crazy Train - Ozzy Osbourne
Simple Man (Rock Version) - Shinedown
Seven Nation Army - The White Stripes
I Wanna Rock - Twisted Sister
Mississippi Queen - Mountain
Call Me the Breeze - Lynyrd Skynyrd
Paradise City - Guns N' Roses
Walk - Pantera
Ace of Spades - Motorhead
The Distance - CAKE
Seven Deadly Sins - Flogging Molly
Rocky Mountain Way - Joe Walsh
Metallica
Master of Puppets
Enter Sandman
AC/DC
Thunderstruck
Back in Black
Highway to Hell



FROM THE FIELD

The Soundtrack of Manure Pumping (Cont.)

Hells Bells

For Those About to Rock (We Salute You)

Jon Bon Jovi

Blaze of Glory

Livin' on a Prayer

Rage Against the Machine

Killing in the Name

Bombtrack

Guerilla Radio

Bulls on Parade

Testify

Sleep Now in the Fire

Take the Power Back

The Offspring

Self Esteem

Come Out and Play

The Kids Aren't Alright

Dropkick Murphys

It's a Long Way to the Top (If You Wanna

Rock'n'Roll)

I'm Shipping to Boston

The State of Massachusetts

Led Zeppelin

Immigrant Song

Kashmir

Whole Lotta Love

Van Halen

You Really Got Me

Eruption

Panama

Built to Last: Reliability and Value

Whether new or used, Puck equipment is built to last. The durability of Puck equipment gives it a long service life despite rugged field conditions. When your operation is ready to grow, you can be sure that your dragline application equipment still holds value with a new owner.

"I saw right away that their equipment was made far superior to anyone else's due to the fact that they use their own equipment to pump,"

Borgic Custom Pumping, which started in 2012, saw the value of Puck equipment and its manufacturing early on. "I saw right away that their equipment was made far superior to anyone else's due to the fact that they use their own equipment to pump," said Neil Borgic. "It lasts, even though we tear the heck out of it." Although still using some of their original equipment, Borgic Custom Pumping has expanded their products for larger hose, more horsepower, and greater flows as their business grew.

Among the most honest opinions in online custom applicator spaces, Puck equipment is not breaking down for applicators with proper maintenance. When Puck pumps, hose carts, and lagoon feeders are sold directly from applicator to applicator, it is because the business has outgrown the equipment capabilities. With any growing business, owners know when an upgrade in horsepower or capacity can make their operation more efficient.

At Puck, we build equipment to withstand the toughest environments of a demanding job. Our production process uses the most durable materials and techniques at every stage of manufacturing. The sturdy, high-flow, high-efficiency pumps and hose carts can continue to bring value after you've outgrown them. Contact your sales representative to learn about our trade-in program or available used equipment.

Today, Puck employees are listening to those songs!

Click and Watch the Video of our Staff's Favorites



We have a
WHOLE SYSTEM APPROACH.

OUR PRODUCTS
can bring your operation solutions from
WATER TO NOZZLE.

Learn more at puck.com/puck-fire or call 712.655.9200



ENJOYMENT

Team Members Enjoy Easter Prizes

To celebrate Easter, our team members picked an egg for candy, money and prizes.



OUR TEAM MEMBERS

Engineering Interns Are Back This Summer

In June, we welcomed back Owen Monson and Brayton Schechinger for a summer internship. Owen returned for his third year of internship at Puck, and Brayton returned for his second year. Both interns are working under the direct supervision of our Lead Product Design Engineer, Elliott Barsby.

This summer, Owen was excited to integrate with the engineering team. This integration will be beneficial in working towards goals the team hopes to accomplish. "I am looking forward to working on individual projects as well as joint projects with fellow employees at Puck's," said Owen when he started his internship.

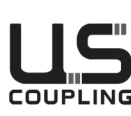


Brayton was also excited to return this summer as an intern and continue building on the skills and relationships he developed last year. "I'm especially looking forward to working on new projects that challenge me and allow me to contribute in the meaningful work at Puck," said Brayton at the beginning of the summer.

"I'm especially looking forward to working on new projects that challenge me and allow me to contribute in the meaningful work at Puck."

Engineering Manager, Matt Lindemann, was excited about our interns returning to his department. "Having the opportunity to be able to bring these guys in and work with them develops both parties," said Matt. "We hope it is as equally rewarding this year as it was last year."

INDUSTRY-LEADING FAMILY OF BRANDS



OUR TEAM MEMBERS

Returning to Manning for Year Four

Returning for a fourth year, Kyle Scholtemeyer is back in Manning from South Africa. After learning more about liquid manure pumping and trying some different jobs out, Kyle is spending a lot of time now in the tractor cab.

Kyle stays on top of what the applicator needs and where hose needs to go to keep downtime to a minimum.

"I run a line up north in South Dakota," he said. "I'm in the hose moving tractor and I lay out hose for the next sets." Kyle stays on top of what the applicator needs and where hose needs to go to keep downtime to a minimum.

Spring pumping in Iowa lasts two to three weeks, and then it's a small break to clean and service equipment before heading up to South Dakota. "When we get to South Dakota we'll do summer pumping on alfalfa fields," reported Kyle. Depending on the weather, alfalfa may be cut two to three times throughout summer. "When we get done, up there, we'll move back to Iowa to work on some more equipment and get ready for the fall."

In 2025, Puck Application has seven team members from across South Africa to join the four Americans who are here full time.



Kyle Scholtemeyer, Puck Application

Puck Application Has a New Website

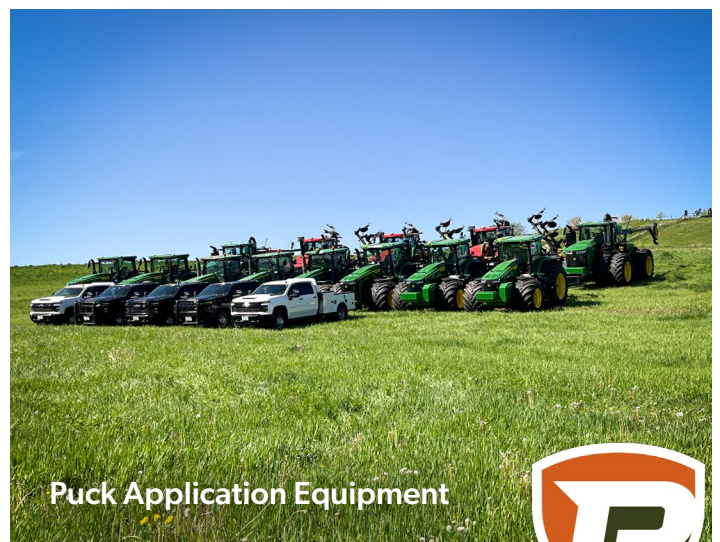
You can find more information, about the Puck Application Team on their website. Visit puckapplication.com to see photos and learn about what they do.



Puck Application Team



Puck Application Equipment



Puck Application Equipment



OUR TEAM MEMBERS

Meet the Team That Delivers

With both customer-facing operations and work behind the scenes, the Shipping Department at Puck stays busy. Two Puck locations have dedicated departments to shipping parts and products; Manning and Worthing.

Much of Emily's day-to-day is keeping up with inventory. "Service always has a pump to work on so there's always parts to reorder," said Emily. She also keeps track of what the Electrical Department uses and the parts needed for their work to ensure a smooth workflow.



Robin is often shipping small packages to customers via delivery services, as well as pallets of goods via less-than-truckload (LTL) shipping across the US and Canada. Robin added that the Manning location also has "at least one, if not both, of our trucks doing Puck delivery of equipment or parts." At each of these locations, the Shipping Department needs to locate, pick, and package the goods, as well.

In addition to the customer-facing parts picking, there is also the picking of parts for other Puck departments. Communication with the sales team ensures customer

orders are shipped on time. Coordination with the Assembly Department is needed for equipment delivery scheduling. The Accounting Department is included in conversations about freight charges. "I will talk with production teams to track repair parts coming through the production process to get sent to the customer," said Robin. Emily is often in talks with the Purchasing Department for new parts, as well as transferring orders between Puck locations.

Getting products to customers on time is certainly the biggest challenge the Shipping Department faces. Small packages are easier, as there are more options and daily shipments. The bigger challenge is the pallets of goods shipped via LTL. "You can choose how you want them sent based on customer need, but being 90 miles from any major city means they don't always have a truck here daily," noted Robin. "You may choose a 2-day shipment but the company may not have a truck in your area to pick up for 3 days. Over time you just figure out who is in your area on certain days and that's who you book with."

Robin notes that international shipments can also be difficult to arrange. After booking a shipping container, you are given a two hour time limit to load the container. "Depending on the number of goods going in the container there can be a couple days of paperwork as each piece needs to be weighed, coded and priced on a number of different forms." These international shipments are often sent to Canadian customers or to our Puck International store in Croatia.

Whether it is from one department in Puck to another or direct to customers, Emily and Robin keep busy ensuring timely shipping fulfillments. The teamwork and dedication from our Shipping Department is just another reason Puck is able to meet the high standards we set for ourselves.





WE CONNECT U.S. COUPLING

Built on a legacy of firefighting innovation, U.S. Coupling & Accessories, Inc. began with high performance equipment for municipal and industrial water transfer. Today, we deliver engineered based solutions for firefighting, industrial, and agricultural applications.

Call **888.447.6441** to learn more.

AGRICULTURAL COUPLINGS & ADAPTERS



INDUSTRIAL COUPLINGS



FIRE COUPLINGS, ADAPTERS, & ACCESSORIES



Puck Fire Demo at Port Canaveral, FL

