



PRODUCT LINEUP

FLOWING FORWARD



Quick Attack

TTR15P

FF4500-45



Puck Fire 712.655.9200 puck.com

Photo from live demonstration at Port Canaveral, FL.



A New Approach to Bringing Water to the Fire

Our products can bring your operations solutions from water source to nozzle.

Water Source

Use our Force Feed products with submersible pumps at an open water source



Connect Hose

Use our U.S. Coupling Manifolds and Couplings to connect Supply Hose



Supply Hose

Our large diameter BullDog Hose supplies water from the Force Feed



Quick Attack

Get to the scene fast and flow up to 4,000 GPM with our Quick Attack



Deploy Hose

Use our Hose Carts to easily and safely deploy hose during set up



Nozzle

Use our U.S. Coupling Smooth Bore Nozzles



FORCE FEED TRUCK

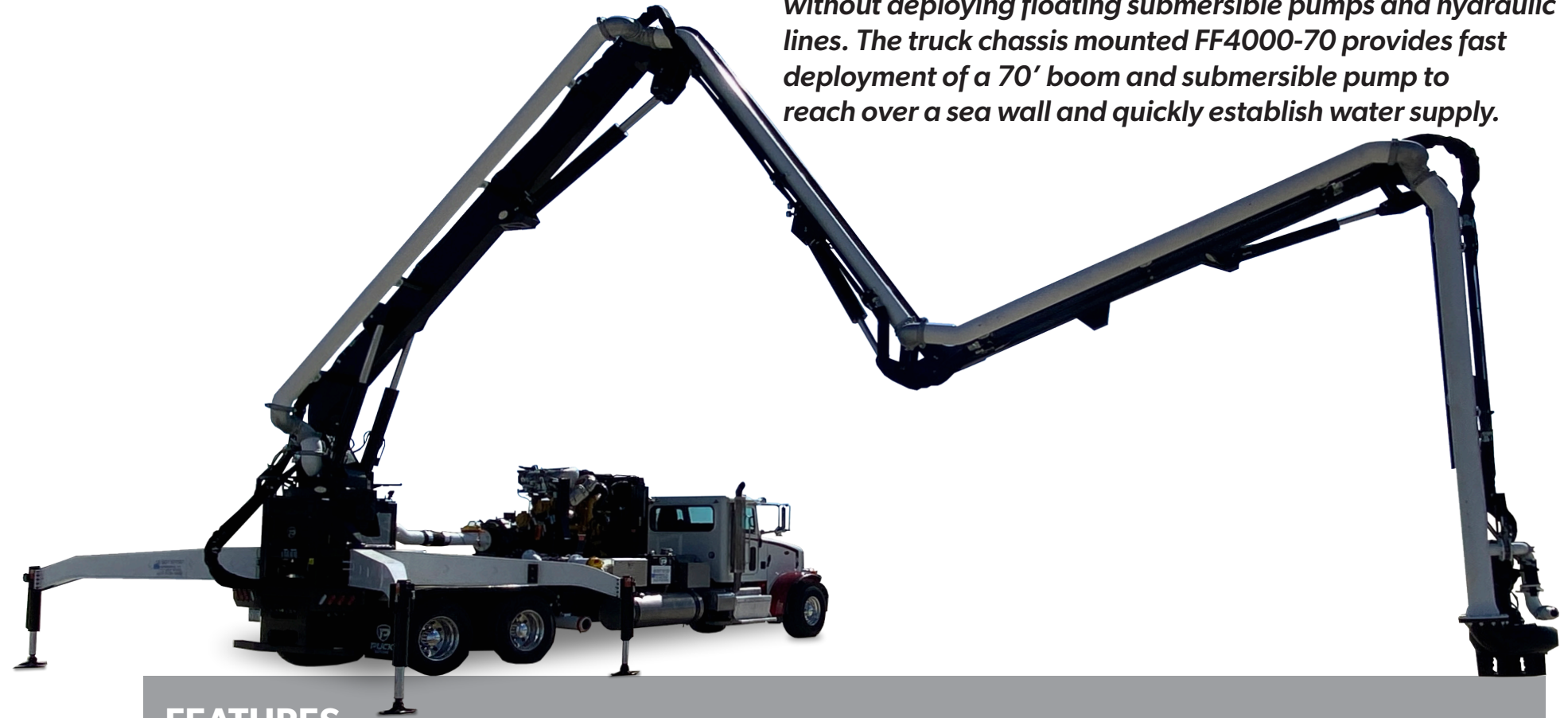


Puck Fire 712.655.9200 puck.com

Photo from live demonstration at Bayonne Jersey.

FF4000-70

Effective fire suppression begins at the source of water. Utilizing the Puck Force Feed products, flowrates over 4,000 gallons per minute (GPM) are quickly and safely achieved without deploying floating submersible pumps and hydraulic lines. The truck chassis mounted FF4000-70 provides fast deployment of a 70' boom and submersible pump to reach over a sea wall and quickly establish water supply.



FEATURES

- ▶ Flow rate: Up to 4,000 GPM
- ▶ 8" Boom pipework
- ▶ 577 HP pump engine
- ▶ Built in Manning, Iowa
- ▶ Boom length: 70'
- ▶ 6"-10" Discharge connections
- ▶ 14 Hour run time

FORCE FEED TRAILER



Puck Fire 712.655.9200 puck.com

Photo from live demonstration in upstate New York.

FF4500-45



Effective fire suppression begins at the source of water. Utilizing the Puck Force Feed products, flowrates over 4,000 gallons per minute (GPM) are quickly and safely achieved without deploying floating submersible pumps and hydraulic lines. The trailer mounted FF4500-45 creates flow rates of up to 4,500 GPM through a 45' boom and mounted submersible pump.

FEATURES

- ▶ Flow rate: Up to 4,500 GPM
- ▶ 8" Boom pipework
- ▶ 577 HP pump engine
- ▶ KROHNE flow rate technology
- ▶ Boom Length: 45'
- ▶ 6"-10" Discharge connections
- ▶ Up to 14 hour run time
- ▶ Built in Manning, Iowa

HOSE CART



Puck Fire 712.655.9200 puck.com

Photo from live demonstration in Mississippi.

TTR15P

Puck Turn Table Reel (TTR) hose carts are built to rapidly deploy and retrieve large amounts of water supply hose. Utilizing the Turn Table Reel design, hose can be deployed safely while in motion, allowing fast and accurate hose deployment. During retrieval, the TTR is able to level-wind the supply hose from a stationary position, allowing for a safe and efficient reloading for the next deployment.

For over 45 years, Puck Enterprises has been safely and efficiently deploying and retrieving lay flat hose with hose carts featuring patented tapered dome ends and an arch guard.



FEATURES

- ▶ Remote control operation with manual backup
- ▶ Full DOT lighting package
- ▶ 2.5 MPH ground speed
- ▶ Holds 2,500' of 7.25" hose
- ▶ 38 HP engine
- ▶ Electric trailer brakes
- ▶ 105° turn table rotation
- ▶ Puck patented Arch Guard and domed reel ends

QUICK ATTACK



Puck Fire 712.655.9200 puck.com

Photo from live demonstration in Mississippi.

QUICK ATTACK

Quickly setup fire suppression with a mobile attack platform using a Puck Quick Attack. Single or dual monitors with remote control capabilities ensure firefighter safety. Flowrates up to 4,000 gallons per minute (GPM) and direct injection capability of foam adds versatility to the Quick Attack.



FEATURES

- ▶ 6" Pipework
- ▶ Automatic drain valves
- ▶ (2) Hose trays to carry and deploy up to 100' of 7.25" lay flat hose
- ▶ Built in Manning, Iowa
- ▶ Dual 6" Storz inlet connections
- ▶ Full LED lighting packages available
- ▶ TFT Monsoon and TFT Master Stream Nozzle compatibility – remote controlled options available

FOAM TOTE TRAILER



Puck Fire 712.655.9200 puck.com

Photo from live demonstration at TEEX Industrial Fire School.

DUAL TOTE TRAILER

Puck Dual Tote Trailers efficiently incorporate foam concentrate and are built with quick foam tote change out features to minimize downtime of foam concentrate delivery. Puck Dual Tote Trailers also feature a self-educing monitor and manifold for increase versatility of your foam concentrate delivery operations.



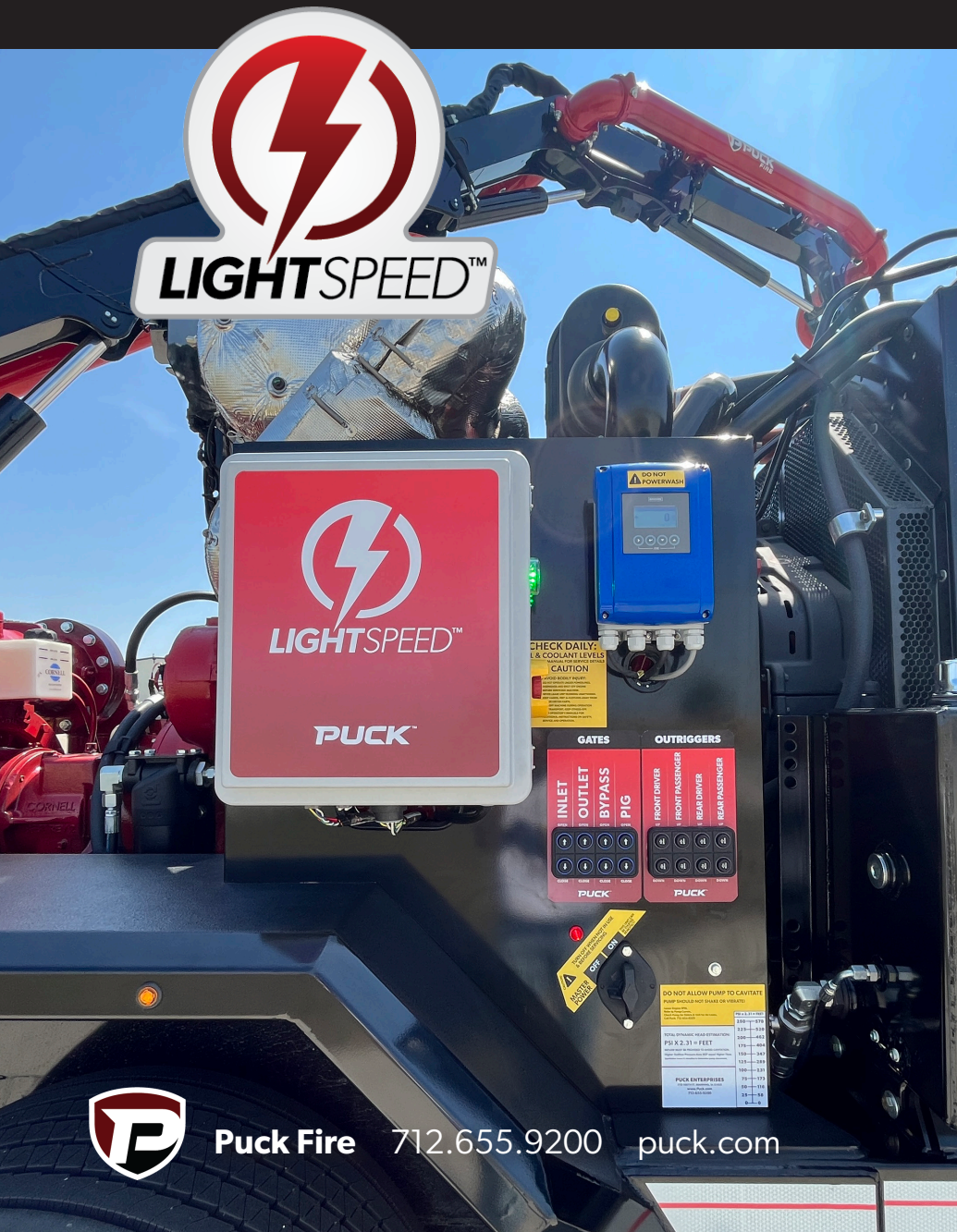
FEATURES

- ▶ Flow rate: Up to 1,250 GPM
- ▶ 1 to 6 Tote carry capacity configurations
- ▶ Capable of holding 1 3/4", 2 1/2", 3", 4", and 5" hose
- ▶ 5" Storz inlet connections
- ▶ Built in Manning, Iowa





CONTROL SYSTEMS



Puck Fire 712.655.9200 puck.com

LIGHTSPEED

At Puck Fire, our equipment is designed to efficiently and safely move water to the fire scene. LightSpeed brings automated pump control to your fingertips. Monitor and adjust engine speeds, open and close valves, and make real-time data-based decisions to ensure everyone on your crew goes home safely at the end of the day.



FEATURES

- ▶ Automated pump control
- ▶ Auto-throttle control of engine speed
- ▶ Accessible from any connected device
- ▶ Open and close valves remotely
- ▶ Customizable operating parameters
- ▶ Live working pressure readings

HOSE



Bulldog
HOSE COMPANY



Puck Fire 712.655.9200 puck.com

HOSE

BullDog Hose Company, a product of Puck Enterprises, has been a legend in firefighting hose technology since 1977. With a commitment to firefighters that is unparalleled, BullDog is at the forefront of fire hose design and construction. Our dedication to constant research and development has positioned us as a premier innovator in fire hose products. BullDog, the hose of choice for fire departments throughout the USA, has come to stand for high performance, durability and safety, with American-made products that are built to last. BullDog is a quality manufacturer of firefighting hose. BullDog Hose, American Made Tough.



ABOUT BULLDOG HOSE COMPANY

- ▶ Industry leading supply and attack hoses for Municipal, Industrial and Forestry firefighting applications.
- ▶ Attack hose construction produces the tightest bend radius and best anti-kink performance in the industry.
- ▶ High performance hose manufactured in sizes from 1-1/2" up to 10".
- ▶ All products are produced from an ISO 9001 certified manufacturing facility, backed by extensive research and development.

MANIFOLDS & COUPLINGS

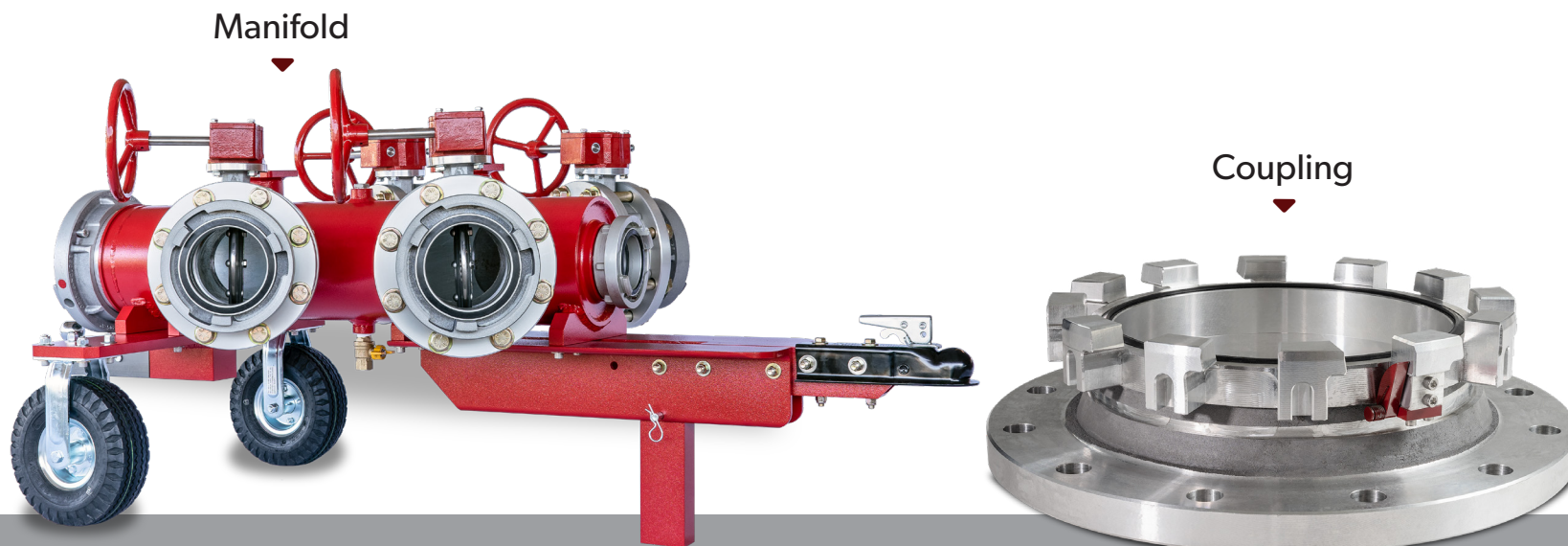
US
COUPLING



Puck Fire 712.655.9200 puck.com

MANIFOLDS & COUPLINGS

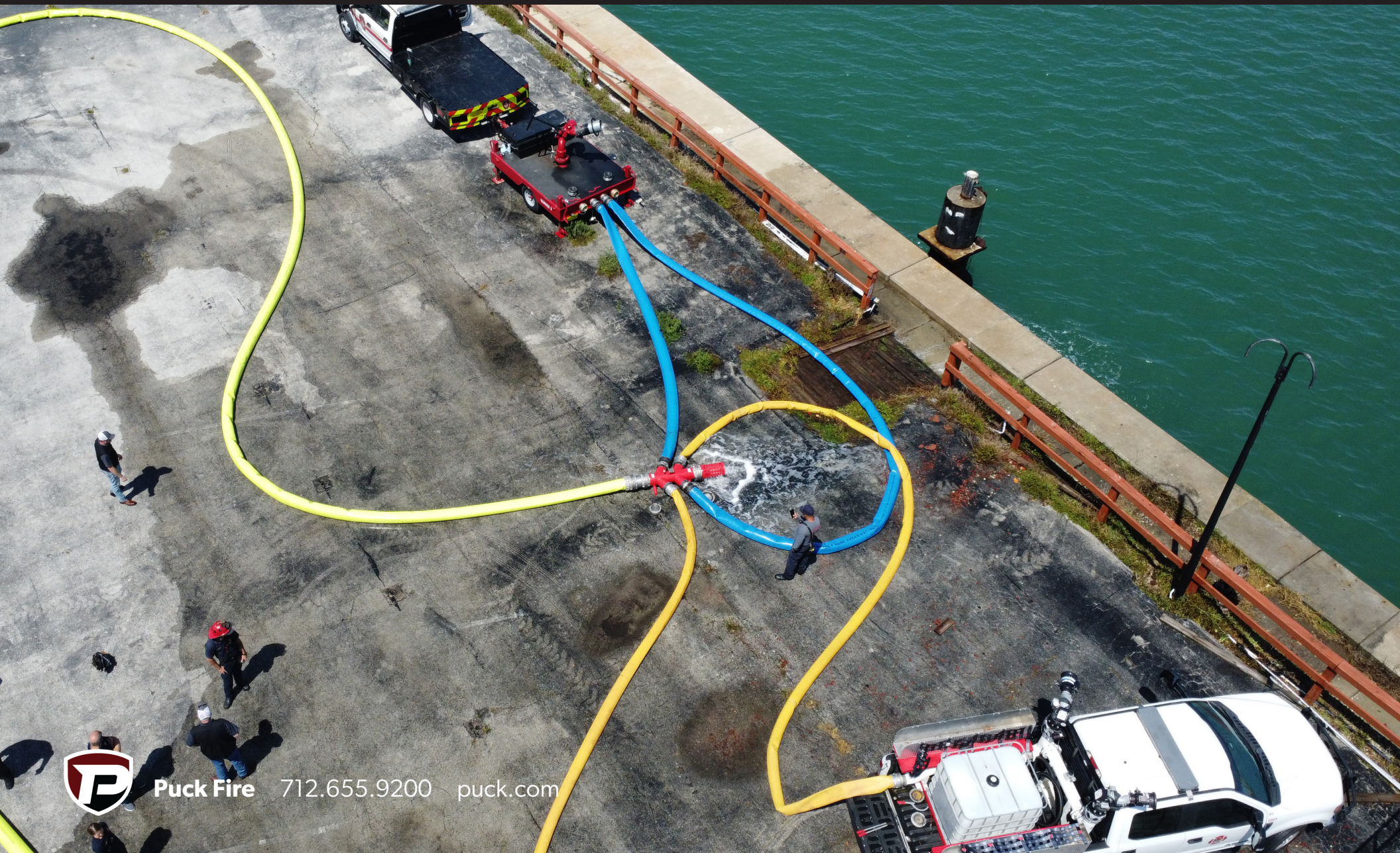
U.S. Coupling, a product of Puck Enterprises, is a leader in the design and manufacturing of lay flat hose fittings for the firefighting industry. U.S. Coupling designs and manufactures fittings in sizes from 1" to 12" diameter. Our in-house manufacturing from start to finish on each fitting ensures unmatched reliability on the fire scene. U.S. Coupling products are proudly 100% produced in North America and have been for over 20 years.



ABOUT U.S. COUPLING

- ▶ U.S. Coupling utilizes the latest technology in CNC machinery for precision machining with tight tolerances.
- ▶ In-house design and engineering to provide revolutionary manifold and coupling performance.
- ▶ Aircraft grade aluminum sourced from North American and European mills to produce high quality products.
- ▶ Coupling and manifold designs provide maximum water flow.

PIGGING SYSTEM



Puck Fire 712.655.9200 puck.com

PIG MANIFOLDS, BALLS & BULLETS

Easily drain the water from your large diameter hose with our system using an air compressor, Air Raid hose, manifold, pig catcher and pigging balls and bullets.

Our complete pigging system is safe and efficient for your crew to use. Instead of breaking down the couplers and lifting heavy hose, your crew can shoot the pigging balls or bullets through the hose with an an compressor and air hose. This process drains the water and cleans the hose at the same time.

Pigging Ball ▶
and Bullet



Pig Launcher ▼
Manifold



◀ Pig Catcher
Manifold



ABOUT THE PIGGING SYSTEM

- ▶ Custom sized manifolds available for your operation
- ▶ Foam pigging balls available in 6", 8" and 10" size
- ▶ Foam bullets available in 8" and 10" sizes
- ▶ Hook Air Raid hose to the Pig Launcher Manifold
- ▶ Catch pigging ball and bullets safely with the pig catcher manifold
- ▶ 50' BullDog Air Raid hose with 80 CFM air compressor



Puck Fire 712.655.9200 puck.com

Photo from live demonstration at TEEX Industrial Fire School.



A New Approach to Bringing Water to the Fire

For over 45 years, Puck Enterprises has been a leading **manufacturer of liquid transfer equipment systems.**

Utilizing our experiences over those 45 years has propelled Puck into introducing our innovative technology into the Industrial Fire market.

We produce equipment that allows your team to **safely and efficiently** move more liquid than ever before.

Puck equipment is Built to Lead.



MISSION, VISION & ISO



MISSION

We strive to create wealth and a higher quality of life for our team, our customers, and our community.

We do this by...

- ▶ Creating products, services, and jobs
- ▶ Creating an atmosphere that supports happiness and longevity
- ▶ Believing hard work leads to rewards and satisfaction- the key ingredients to an enriched quality of life

ISO 9001:2015

Puck Enterprises has produced a quality management system compliant with ISO 9001:2015 standards.

By establishing the Puck Quality Management System, Puck has established internal standards to achieve improved customer and employee satisfaction. The standards set by ISO 9001 ensures that Puck is able to measure ourselves and our processes to ensure that we are performing our best.



Puck Fire 712.655.9200 puck.com

VISION

We believe we can lead the industries we serve by creating innovative solutions with positive applications and effects.

That takes...

▶ **Teamwork**

We can accomplish a great deal working as part of a team. We take pride in what we do, the people we serve and the land we rely on. We can't accomplish this on our own, but together we can make great strides.

▶ **Innovation**

Finding a better way is our motto. We encourage our staff to stretch their capabilities and learn more to find a better way and make your operations more efficient and more profitable. We are often looking for new technologies and processes to create more efficiencies in equipment and business.

▶ **Enjoyment**

We strive to create an environment where we find happiness in what we do. We work together to develop more efficient ways for you to do business and have fun while doing so.

PROUDLY AMERICAN MADE

In the land of the free Puck is built to lead. Our products are proudly hand-crafted in the heart of this great country—in the very town our company was founded over 45 years ago. We utilize only the best materials from the ground up to keep your operation running strong year after year.



MANNING

1110 100th St
Manning, IA
712.655.9200

DUBUQUE

10166 Hartbecke Rd
Suite B · Farley, IA
712.655.9203

WORTHING

47086 Pioneer St
Worthing, SD
712.655.9202

ANGIER

BullDog Hose Company
141 Junny Rd
Angier, NC
712.655.9201

DOTHAN

U.S. Coupling
1134 North Range St
Dothan, AL
888.447.6441

INTERNATIONAL

Vukovarska 229 C
31000 Osijek · Croatia
+ 385 31 659 229

Follow us on social media



A new approach to bringing water to the fire.



Puck Fire 712.655.9200 puck.com