



PUCKTM
FIRE

PRODUCT LINEUP



Puck Fire 712.655.9200 puck.com

Photo from live demonstration at TEEX Industrial Fire School.



A New Approach to Bringing Water to the Fire

For over 40 years, Puck Enterprises has been a leading **manufacturer of liquid transfer equipment systems.**

Utilizing our experiences over those 40 years has propelled Puck into introducing our innovative technology into the Industrial Fire market.

We produce equipment that allows your team to **safely and efficiently** move more liquid than ever before.

Puck equipment is Built to Lead.

TABLE OF CONTENTS

▶ Quick Attack	Pages 4-5	▶ Turn Table Reel	Pages 18-19
▶ Force Feed Truck	Pages 6-7	▶ LightSpeed	Pages 20-21
▶ Force Feed Trailer	Pages 8-9	▶ Hose	Pages 22-23
▶ Foam Tote Trailer	Pages 10-11	▶ Couplings	Pages 24-25
▶ Hose Cart	Pages 16-17		

QUICK ATTACK



Puck Fire | 712.655.9200 | puck.com

QUICK ATTACK

Quickly setup fire suppression with a mobile attack platform using a Puck Quick Attack. Single or dual monitors with remote control capabilities ensure firefighter safety. Flowrates up to 4,000 gpm and direct injection capability of foam adds versatility to the Quick Attack.



FEATURES

- ▶ 6" or 8" Pipework
- ▶ Automatic drain valves
- ▶ (2) Hose trays to carry and deploy up to 100' of 7.25" lay flat hose
- ▶ Built in Manning, Iowa
- ▶ Dual 6" or 8" Storz Inlet Connections
- ▶ Full LED lighting packages available
- ▶ TFT Monsoon and TFT Master Stream Nozzle compatibility – remote controlled options available

FORCE FEED TRUCK



Puck Fire 712.655.9200 puck.com

Photo from live demonstration at Bayonne Jersey.

FF4000-70

Effective fire suppression begins at the source of water. Utilizing the Puck Force Feed products, flowrates over 4,000 gpm are quickly and safely achieved without deploying floating submersible pumps and hydraulic lines. The truck chassis mounted FF4000-70 provides fast deployment of a 70' boom and submersible pump to reach over a sea wall and quickly establish water supply.



FEATURES

- ▶ Flow rate: Up to 4,000 gpm
- ▶ 8" Boom pipework
- ▶ 577 HP pump engine
- ▶ Built in Manning, Iowa
- ▶ Boom length: 70'
- ▶ 6"-10" Discharge connections
- ▶ 14 Hour run time

FORCE FEED TRAILER



Puck Fire 712.655.9200 puck.com

Photo from live demonstration in upstate New York.

FF4500-45

Effective fire suppression begins at the source of water. Utilizing the Puck Force Feed products, flowrates over 4,000 gpm are quickly and safely achieved without deploying floating submersible pumps and hydraulic lines. The trailer mounted FF4500-45 creates flow rates of up to 4,500 gpm through a 45' boom and mounted submersible pump.



FEATURES

- ▶ Flow rate: Up to 4,500 gpm
- ▶ 8" Boom pipework
- ▶ 577 HP pump engine
- ▶ KROHNE Flow Rate technology
- ▶ Boom Length: 45'
- ▶ 6"-10" Discharge connections
- ▶ Up to 14 hour run time
- ▶ Built in Manning, Iowa

FOAM TOTE TRAILER



Puck Fire 712.655.9200 puck.com

Photo from live demonstration at TEEX Industrial Fire School.

DUAL TOTE TRAILER

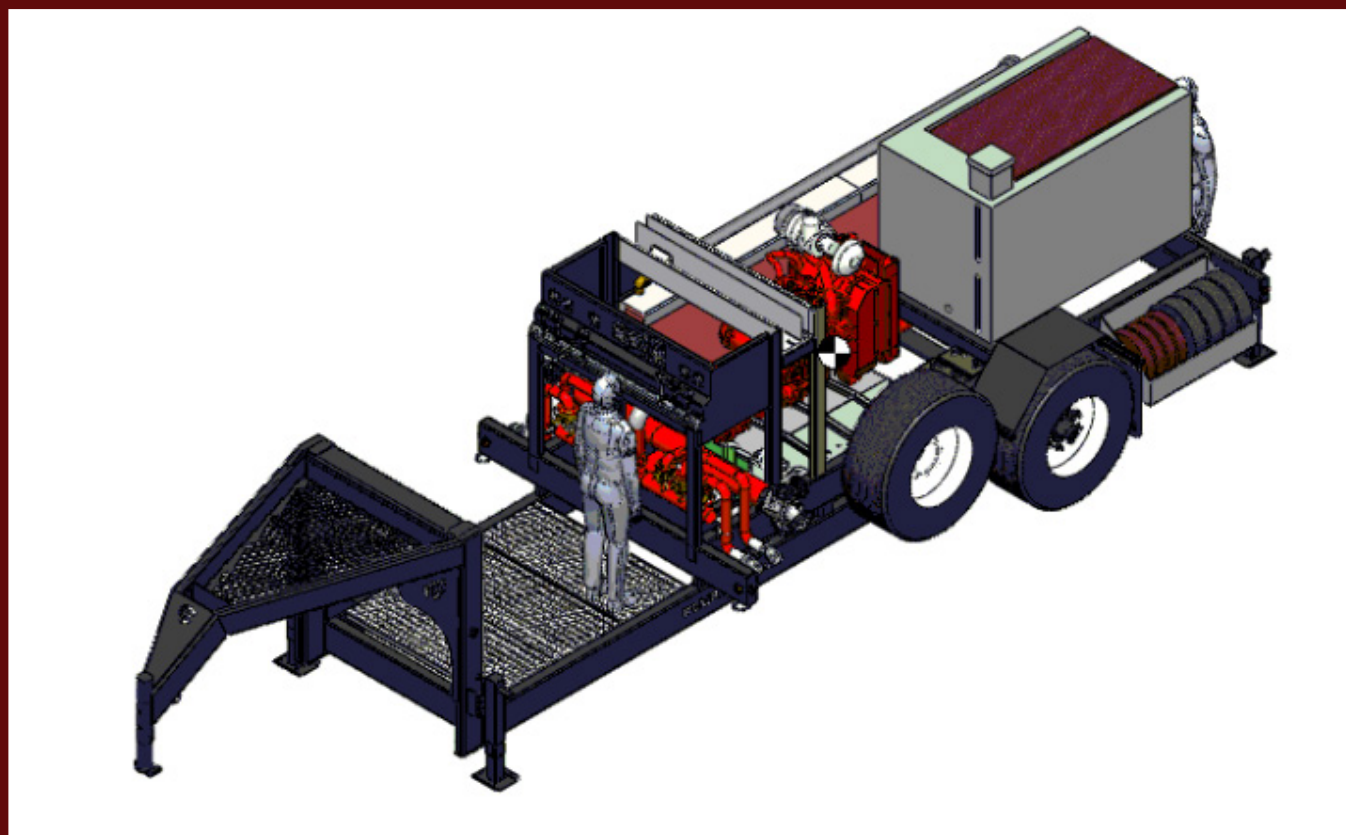
Puck Dual Tote Trailers efficiently incorporate foam concentrate and are built with quick foam tote change out features to minimize downtime of foam concentrate delivery. Puck Dual Tote Trailers also feature a self-educing monitor and manifold for increase versatility of your foam concentrate delivery operations.



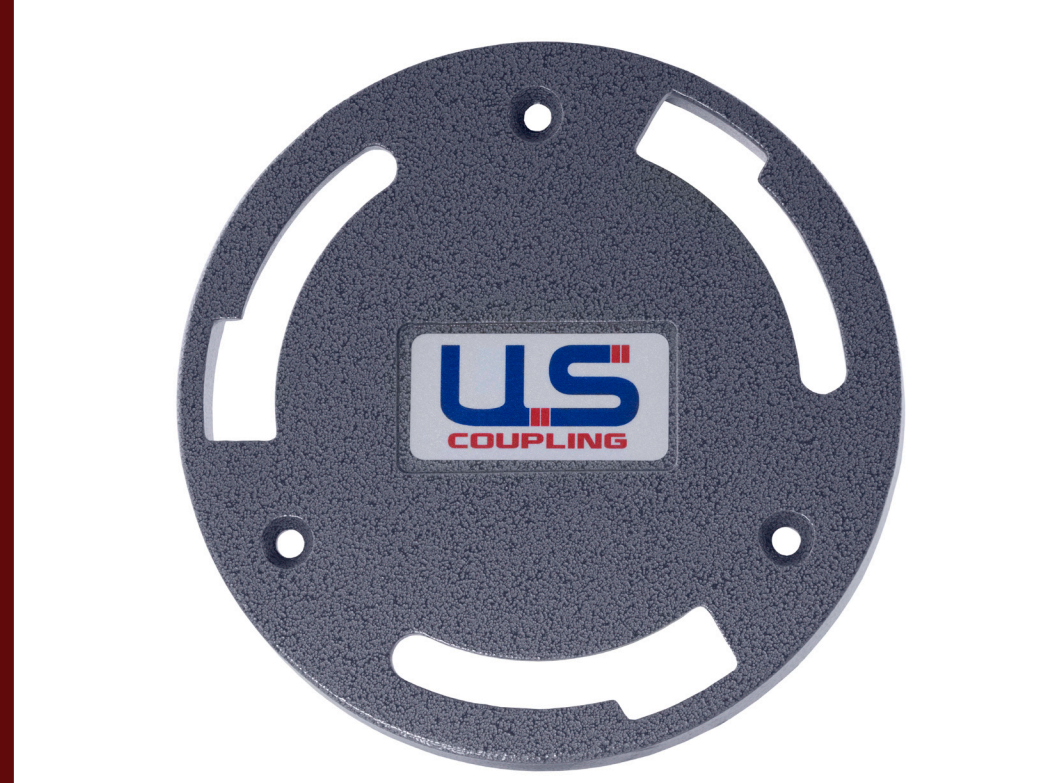
FEATURES

- ▶ Flow rate: Up to 2,000 gpm
- ▶ 1 to 6 Tote carry capacity configurations
- ▶ 5" Storz Inlet Connections
- ▶ Built in Manning, Iowa

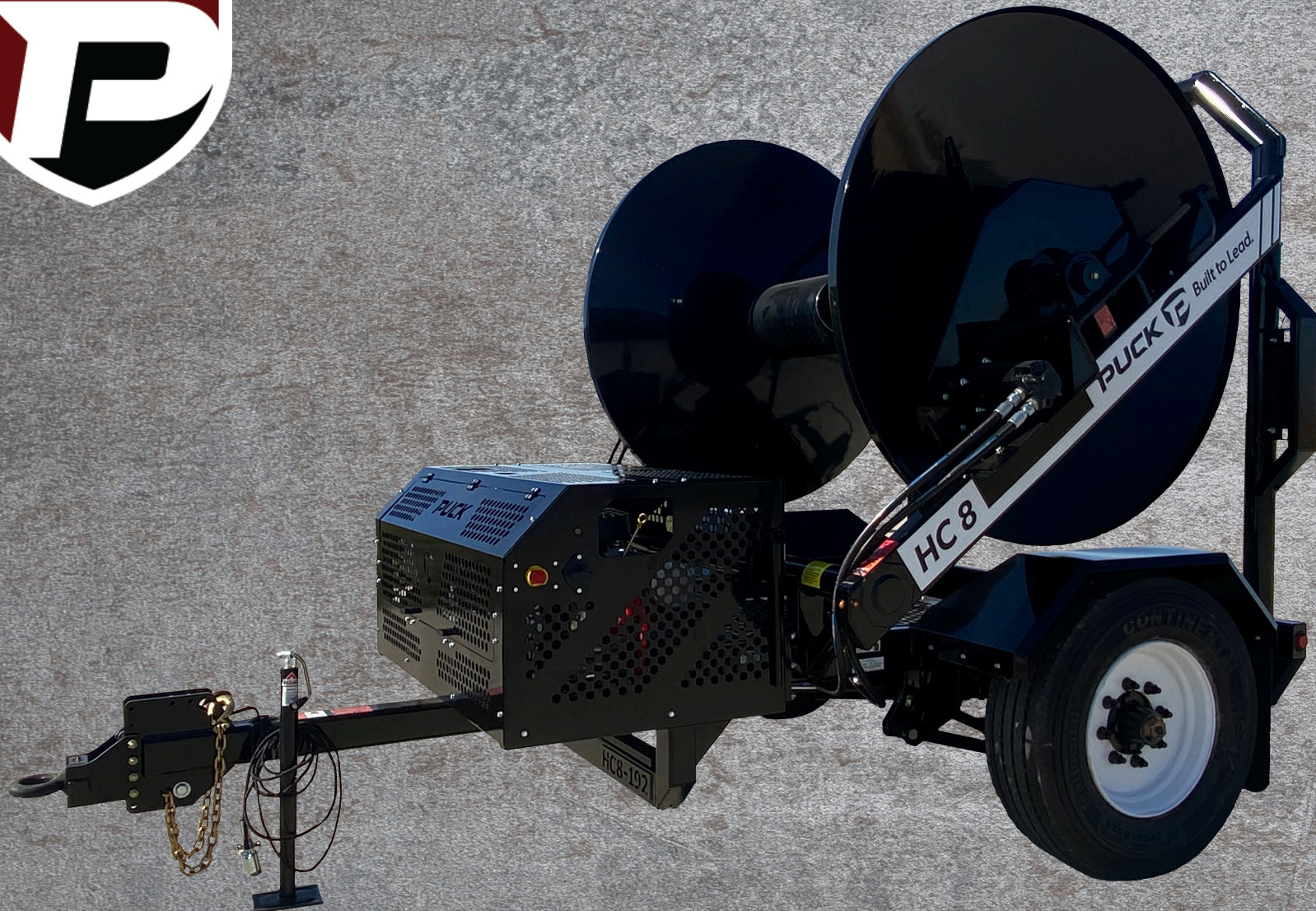








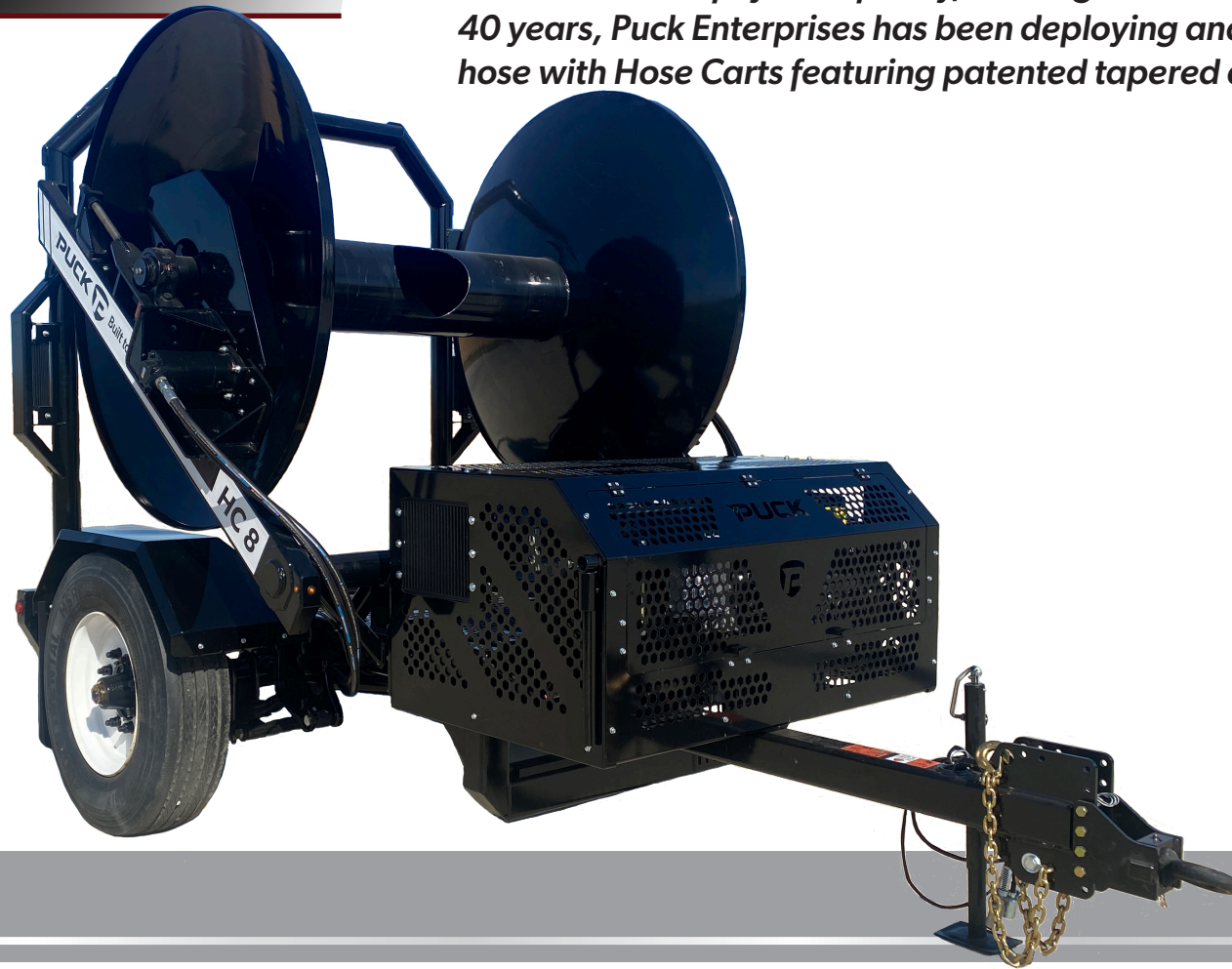
HOSE CART



Puck Fire 712.655.9200 puck.com

HC8P

Proper fire suppression relies on quick deployment of water supply hose. Utilizing Puck Hose Carts, lay flat supply hose can be deployed and retrieved safely and quickly, utilizing mechanical power. For over 40 years, Puck Enterprises has been deploying and retrieving lay flat hose with Hose Carts featuring patented tapered domed ends.



FEATURES

- ▶ Carry capacity: 1 Mile of 6" lay flat hose
- ▶ 35 HP Engine
- ▶ Built in Manning, Iowa
- ▶ Manual and remote control options
- ▶ 15 rpm Reel speed

TURN TABLE REEL



Puck Fire 712.655.9200 puck.com

TTR15P

Puck Turn Table Reel (TTR) hose carts are built to rapidly deploy and retrieve large amounts of water supply hose. Utilizing the Turn Table Reel design, hose can be deployed safely while in motion, allowing fast and accurate hose deployment. During retrieval, the TTR is able to level-wind the supply hose from a stationary position, allowing for a safe and efficient reloading for the next deployment.

For over 40 years, Puck Enterprises has been safely and efficiently deploying and retrieving lay flat hose with hose carts featuring patented tapered dome ends and an arch guard.



FEATURES

- ▶ Manual and remote control operations
- ▶ Full DOT lighting
- ▶ Built in Manning, Iowa
- ▶ 35 HP Engine
- ▶ Electric trailer brakes

LIGHTSPEED



LIGHTSPEED

At Puck Fire, our equipment is designed to efficiently and safely move water to the fire scene. LightSpeed brings real-time asset control to your fingertips. Monitor and adjust engine speeds, open and close valves, and make real-time data-based decisions to ensure everyone on your crew goes home safely at the end of the day.



FEATURES

- ▶ Real-time asset control
- ▶ Auto-throttle control of engine speed
- ▶ Accessible from any connected device
- ▶ Open and close valves remotely
- ▶ Customizable operating parameters
- ▶ Live working pressure readings

HOSE



Bulldog
HOSE COMPANY



Puck Fire 712.655.9200 puck.com

HOSE

BullDog Hose Company, a product of Puck Enterprises, has been a legend in firefighting hose technology since 1977. With a commitment to firefighters that is unparalleled, BullDog is at the forefront of fire hose design and construction. Our dedication to constant research and development has positioned us as a premier innovator in fire hose products. BullDog, the hose of choice for fire departments throughout the USA, has come to stand for high performance, durability and safety, with American-made products that are built to last. BullDog is a quality manufacturer of firefighting hose. BullDog Hose, American Made Tough.



ABOUT BULLDOG HOSE COMPANY

- ▶ Industry leading supply and attack hoses for Municipal, Industrial and Forestry firefighting applications.
- ▶ Attack hose construction produces the tightest bend radius and best anti-kink performance in the industry.
- ▶ High performance hose manufactured in sizes from 1 ½" up to 10".
- ▶ All products are produced from an ISO 9001 certified manufacturing facility, backed by extensive research and development.

COUPLINGS

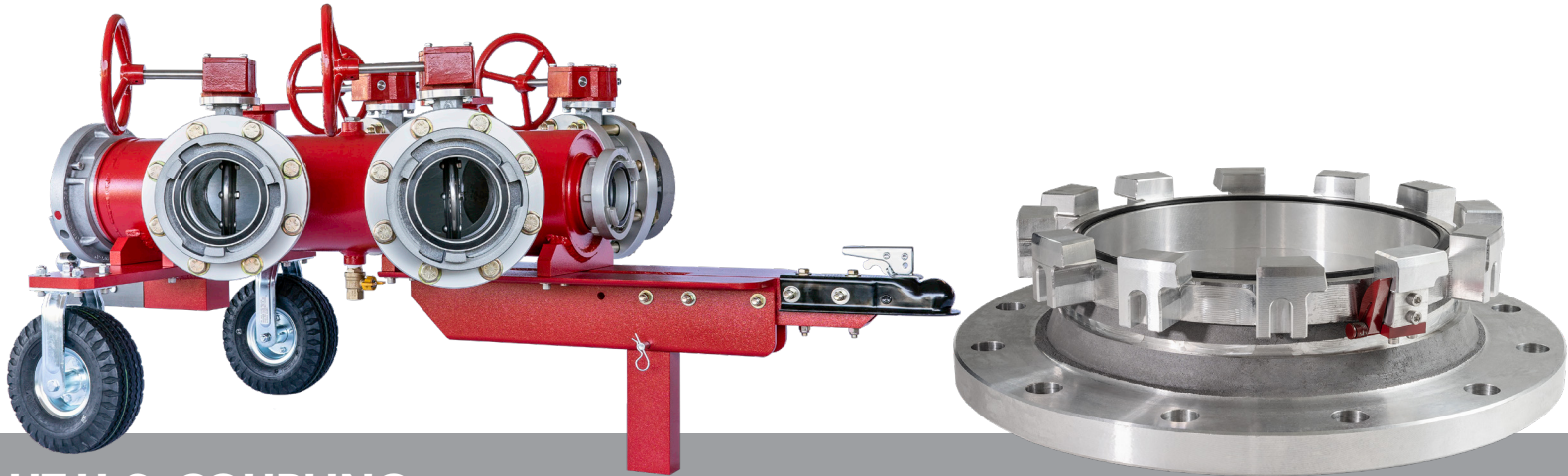
US
COUPLING



Puck Fire 712.655.9200 puck.

COUPLINGS

U.S. Coupling, a product of Puck Enterprises, is a leader in the design and manufacturing of lay flat hose fittings for the firefighting industry. U.S. Coupling designs and manufactures fittings in sizes from 1" to 12" diameter. Our in-house manufacturing from start to finish on each fitting ensures unmatched reliability on the fire scene. U.S. Coupling products are proudly 100% produced in North America and have been for over 20 years.



ABOUT U.S. COUPLING

- ▶ U.S. Coupling utilizes the latest technology in CNC machinery for precision machining with tight tolerances.
- ▶ In-house design and engineering to provide revolutionary manifold and coupling performance.
- ▶ Aircraft grade aluminum sourced from North American and European mills to produce high quality products.
- ▶ Coupling and manifold designs provide maximum water flow.

WE'VE GOT YOUR BACK.

From our parts department to our knowledgeable staff and training videos, we're here to support you!



PUCK PARTS DEPARTMENT

Having the right part for the job is crucial to keeping things running smooth. Most parts are only one day away.



Follow us on social media





LOCATIONS

MANNING

1110 100th St
Manning, IA
712.655.9200

DUBUQUE

10166 Hartbecke Rd
Suite B · Farley, IA
712.655.9203

WORTHING

47086 Pioneer St
Worthing, SD
712.655.9202

ANGIER

*Bulldog Hose
Company*
141 Junny Rd
Angier, NC
712.655.9201

DOTHAN

U.S. Coupling
1134 North Range St
Dothan, AL
888.447.6441

INTERNATIONAL

Vukovarska 229 C
31000 Osijek · Croatia
+ 385 31 659 229

PROUDLY AMERICAN MADE

In the land of the free Puck is built to lead. Our products are proudly hand-crafted in the heart of this great country—in the very town our company was founded over 40 years ago. We utilize only the best materials from the ground up to keep your operation running strong year after year.



PUCK™ FIRE

A new approach to bringing water to the fire.



Puck Fire 712.655.9200 puck.com