

HOSE MOVER

OPERATING INSTRUCTIONS



Operating Information



Warning! Before You Begin

Before operating this hose mover, make sure you are familiar with all procedures involved in safe and effective use of the equipment.

Do Not Overload the Hose Mover

Do not move hose by menders or couplers through reel. Failure to follow this recommendation can lead to possible accidents, damage to hose or mover, injury, or death.

Do Not Misuse Machine

This machine is designed for hose to be moved from tractor cab.

NEVER move hose by hand.

DO NOT park on hose.

Failure to heed these warnings can lead to possible accidents, damage to hose or machine, injury or death.

Do Not Stand Behind or Near the Mover While Operating

- Before operating this equipment, make sure there are no people in or on this machine. Keep everyone away while operating this machine.
- Never operate this equipment if any part is damaged or missing.

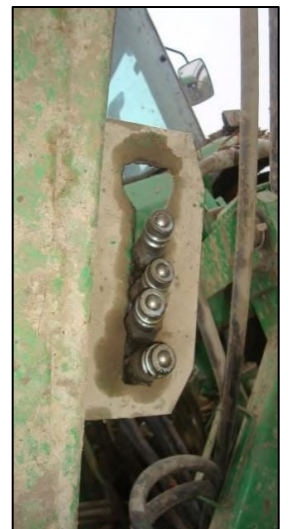
Attaching Mover to the Tractor

Make sure the tractor's hydraulic oil is at an adequate level for operation.

Check the hydraulic system. Be sure the ISO couplers on the mover are compatible to the hydraulic outlets on the tractor. Make sure the connectors are clean and in good condition. The mover uses a closed center hydraulic system with standard ISO couplers.



ISO coupler
compatibility check



Hydraulic lines



**MAKE SURE NO ONE IS
STANDING NEAR THE HOSE MOVER.**

Test each of the hydraulic controls to learn secured in travel position the function of each hydraulic lever to check that the Hose Mover is responding correctly.

Secure the hydraulic lines in their travel position.

Road travel: secure the mover with provided locking pin.

Locking pin enabled for road travel



Moving Hose

Do Not Move Hose by Menders or Couplers

Do not move hose by menders or couplers or couplers through reel. Failure to follow this recommendation can lead to possible accidents, damage to hose or mover, injury or death.

Hose Moving Procedure

Attach the Hose Mover to the tractor. Check hydraulic oil levels, and the condition of the grease zerks. Attach the hydraulic couplers to the tractor's hydraulic system. Remove the locking pin from its traveling position and place in the stowed position. This allows the Hose Mover to rotate with the hose as you move through the field.

Lower the mover towards the ground, leaving enough distance between the ground and bottom of the mover to go over the top of the hose without making contact. Slowly back-up towards hose.

Once the portion of the Hose Mover closest to the tractor is on the other side of the hose, slowly lower the mover to the ground.



Slowly drive forward, picking up the hose, and begin pulling to accommodate the applicator's hose needs.

Lower hose mover towards the ground and back-up to hose.





Slowly drive forward and pick up hose.

Transporting Hose Mover

Follow the state and local laws concerning the transportation of agricultural equipment on public roadways.

Secure the hydraulic lines in their travel position.

ALWAYS secure locking pin before transporting the mover

Hydraulic lines secured in travel position.



Revision History

Revision Number	Date	Equipment Line	Comments
1	5/10/2019	Hose Movers	Initial